



National  
Alliance



# BELONGING, BEING & BECOMING

## The Early Years Learning Framework

# An Introduction



# COAG Agenda

- The Early Years Learning Framework (EYLF), is part of the **Council of Australia Government's (COAG) reform agenda** for early childhood education and care.
- It is a key component of the Australian Government's **National Quality Agenda** for early childhood education and care.
- Children's rights and needs are at the centre of **policy development** and includes responsibility for **creating conditions** in which **children and families can thrive.**

# An introduction to the EYLF

## The EYLF:

- Is part of the **National Early Childhood Development Strategy** and **National Early Years Workforce Strategy**.
- Provides a **national approach to quality and regulation**.
- Describes **Early Childhood Pedagogy and Principles, Practice and Learning Outcomes** essential to support and enhance young children's learning from birth to five years as well as supports the transition to school.



# What is the Early Years Learning Framework?

The Early Years Learning Framework (EYLF) is a **national framework** which will ensure **quality and consistency** in all **delivery of early childhood education programs across all early childhood settings.**

It covers children from **birth to five years** and **supports transition to formal schooling.**



# Who is the EYLF for?

- The Framework has been designed for use by early childhood educators working in partnership with families.
- It does not tell educators what to teach; it provides direction about intent, pedagogy, the foundation for specific local curriculum and outcomes for children's learning.



# Who is the EYLF for?

- The Framework is designed to inspire conversations, improve communication and provide a common language... (EYLF p8)
- The EYLF will underpin all early childhood education and care programs and initiatives nationally.
- Services will be expected to start exploring and working with the EYLF from the start of 2010.
- The release of the Educator's Guide in 2010 will support the implementation of the EYLF.



# What is the EYLF based on?

- Conclusive national and international evidence as to the importance of early childhood
- Considerable input from the early childhood sector, academics and Australian State and Territory Governments
- Strong connections to Reflect, Respect, Relate (DECS), which is a primary supporting resource.



# Belonging, Being, Becoming



“Fundamental to the Framework is a view of children’s lives as characterised by belonging, being and becoming” (EYLF p7).

Consider the balance of these concepts within your program.



# Elements of the EYLF

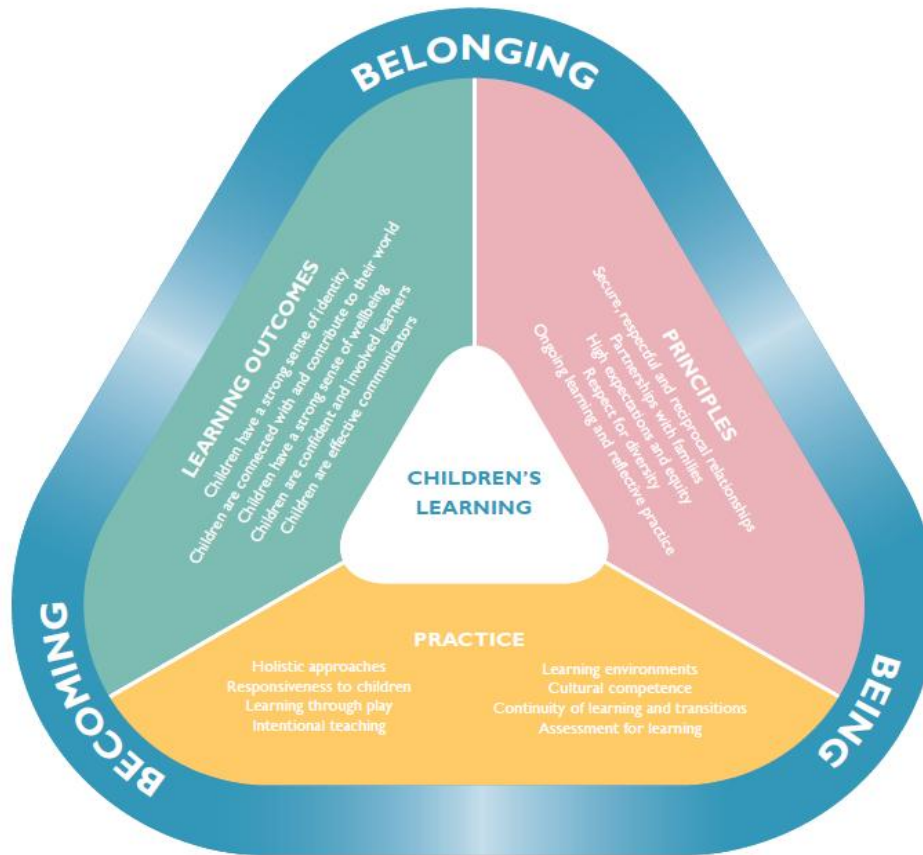


Figure 1: Elements of the Early Years Learning Framework



# Early Childhood Pedagogy

“The term pedagogy refers to the holistic nature of early childhood educators’ professional practice (especially those aspects that involve building and nurturing relationships), curriculum decision-making, teaching and learning”  
(EYLF p11)



# Principles

1. Secure, respectful and reciprocal relationships
2. Partnerships
3. High expectations and equity
4. Respect for diversity
5. Ongoing learning and reflective practice



# Practice

- Holistic approaches
- Responsiveness to children
- Learning through play
- Intentional teaching
- Learning environments
- Cultural competence
- Continuity of learning and transitions
- Assessment for learning



# Learning Outcomes

1. Children have a strong sense of identity
2. Children are connected with and contribute to their world
3. Children have a strong sense of wellbeing
4. Children are confident and involved learners
5. Children are effective communicators



# Frequently asked questions

- Where can I get a **copy** of the EYLF or the Educator's Guide?
- Is there a **date for implementation**?
- Will the EYLF link in to **QA and Regulatory requirements**?
- Is the EYLF a **syllabus or a curriculum framework**?
- Where do we **start**?
- What **support resources** do you have available?
- **Training and/or professional development** opportunities?

Your PSC can answer these questions. See the following slide for details of your State PSC and for resources & websites.



# Resources and Websites

PSCTas - [psctas@gowrie-tas.com.au](mailto:psctas@gowrie-tas.com.au) 1800 647 718

Website: [www.psctas.org.au](http://www.psctas.org.au)

- **Assessment in the Early Years – Gowrie Australia**
- **Belonging, Being & Becoming – The Early Years Learning Framework** (July 2009)
- **The Early Years Learning Framework In Action – Educators’ stories and models for practice**
- **Belonging, Being & Becoming – A Guide for Educators (Draft 2009)**
- **Team/Scheme Meeting package**



# Resources and Websites

- **DEEWR** – [www.deewr.gov.au](http://www.deewr.gov.au)
- **EYLF** – [www.deewr.gov.au/eylf](http://www.deewr.gov.au/eylf)
- **Early Childhood Reforms Agenda** – [www.mychild.gov.au/earlychildhoodagenda.htm](http://www.mychild.gov.au/earlychildhoodagenda.htm)